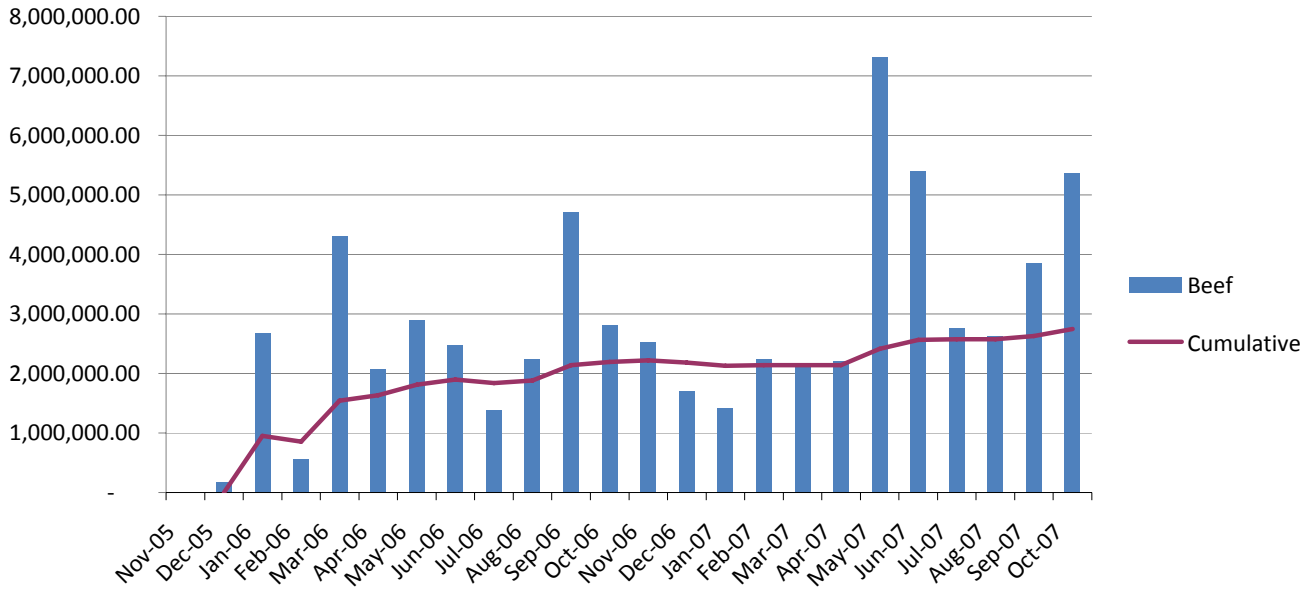
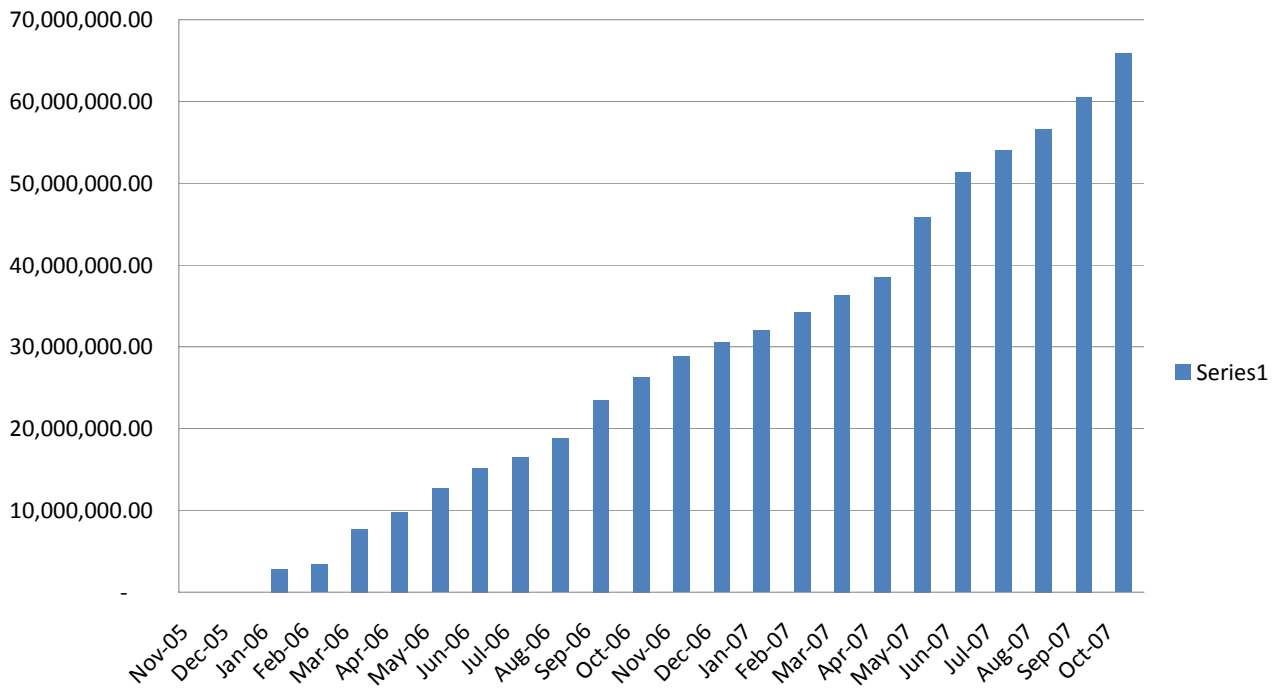


<b>IMPORTS - KG</b>												
<b>Month</b>	<b>Beef</b>	<b>Beef total</b>	<b>Cumulative</b>	<b>Hoc Casings</b>	<b>Casings total</b>	<b>Cumulative</b>	<b>Pork</b>	<b>Pork total</b>	<b>Cumulative</b>	<b>Sheep</b>	<b>Sheep total</b>	<b>Cumalitive</b>
	<b>Kg</b>	<b>Kg</b>	<b>Kg</b>	<b>Kg</b>	<b>Kg</b>	<b>Kg</b>	<b>Kg</b>	<b>Kg</b>	<b>Kg</b>	<b>Kg</b>	<b>Kg</b>	<b>Kg</b>
Nov-05												
Dec-05	184,257.02		-			-	545,394.84	545,394.84	272,697.42	753,525.61		-
Jan-06	2,669,406.42	2,853,663.44	951,221.15	200,990.20	200,990.20	66,996.73	333,718.00	879,112.84	293,037.61	1,374,115.45	2,127,641.06	709,213.69
Feb-06	562,023.44	3,415,686.88	853,921.72	126,501.20	327,491.40	81,872.85	478,468.26	1,357,581.10	339,395.28	1,031,740.39	3,159,381.45	789,845.36
Mar-06	4,307,584.43	7,723,271.31	1,544,654.26	127,148.00	454,639.40	90,927.88	1,079,288.34	2,436,869.44	487,373.89	3,903,290.05	7,062,671.50	1,412,534.30
Apr-06	2,081,343.48	9,804,614.79	1,634,102.47	125,790.00	580,429.40	96,738.23	220,196.00	2,657,065.44	442,844.24	2,239,649.34	9,302,320.84	1,550,386.81
May-06	2,896,393.45	12,701,008.24	1,814,429.75	298,879.50	879,308.90	125,615.56	499,143.61	3,156,209.05	450,887.01	2,069,459.18	11,371,780.02	1,624,540.00
Jun-06	2,478,877.93	15,179,886.17	1,897,485.77	148,500.00	1,027,808.90	128,476.11	537,392.00	3,693,601.05	461,700.13	1,930,087.75	13,301,867.77	1,662,733.47
Jul-06	1,379,087.37	16,558,973.54	1,839,885.95	474,629.06	1,502,437.96	166,937.55	2,285,437.75	5,979,038.80	664,337.64	2,123,918.76	15,425,786.53	1,713,976.28
Aug-06	2,240,307.10	18,799,280.64	1,879,928.06	373,217.10	1,875,655.06	187,565.51	610,296.00	6,589,334.80	658,933.48	1,476,774.65	16,902,561.18	1,690,256.12
Sep-06	4,712,760.08	23,512,040.72	2,137,458.25	199,980.90	2,075,635.96	188,694.18	291,176.00	6,880,510.80	625,500.98	696,505.94	17,599,067.12	1,599,915.19
Oct-06	2,807,657.44	26,319,698.16	2,193,308.18	-	2,075,635.96	172,969.66	145,124.00	7,025,634.80	585,469.57	1,032,204.90	18,631,272.02	1,552,606.00
Nov-06	2,519,662.81	28,839,360.97	2,218,412.38	287,752.70	2,363,388.66	181,799.13	701,415.86	7,727,050.66	594,388.51	1,926,115.65	20,557,387.67	1,581,337.51
Dec-06	1,710,763.27	30,550,124.24	2,182,151.73	-	2,363,388.66	168,813.48	692,965.00	8,420,015.66	601,429.69	1,070,362.00	21,627,749.67	1,544,839.26
Jan-07	1,418,321.75	31,968,445.99	2,131,229.73	-	2,363,388.66	157,559.24	693,642.20	9,113,657.86	607,577.19	1,017,356.72	22,645,106.39	1,509,673.76
Feb-07	2,238,547.51	34,206,993.50	2,137,937.09	330,020.43	2,693,409.09	168,338.07	1,992,160.14	11,105,818.00	694,113.63	2,286,543.84	24,931,650.23	1,558,228.14
Mar-07	2,138,716.21	36,345,709.71	2,137,982.92	279,731.00	2,973,140.09	174,890.59	880,959.46	11,986,777.46	705,104.56	5,286,578.26	30,218,228.49	1,777,542.85
Apr-07	2,206,153.88	38,551,863.59	2,141,770.20	326,257.00	3,299,397.09	183,299.84	816,903.75	12,803,681.21	711,315.62	2,662,608.93	32,880,837.42	1,826,713.19
May-07	7,319,932.86	45,871,796.45	2,414,305.08	- 14,847.70	3,284,549.39	172,871.02	2,180,024.47	14,983,705.68	788,616.09	7,022,672.91	39,903,510.33	2,100,184.75
Jun-07	5,407,225.73	51,279,022.18	2,563,951.11	348,350.00	3,632,899.39	181,644.97	1,032,905.71	16,016,611.39	800,830.57	2,054,841.44	41,958,351.77	2,097,917.59
Jul-07	2,765,013.04	54,044,035.22	2,573,525.49	299,350.00	3,932,249.39	187,249.97	1,909,055.24	17,925,666.63	853,603.17	3,801,184.82	45,759,536.59	2,179,025.55
Aug-07	2,624,552.10	56,668,587.32	2,575,844.88	300,155.04	4,232,404.43	192,382.02	843,816.12	18,769,482.75	853,158.31	1,426,819.91	47,186,356.50	2,144,834.39
Sep-07	3,849,513.19	60,518,100.51	2,631,221.76	150,516.00	4,382,920.43	190,561.76	1,857,073.18	20,626,555.93	896,806.78	3,145,257.27	50,331,613.77	2,188,331.03
Oct-07	5,362,441.85	65,880,542.36	2,745,022.60	399,348.14	4,782,268.57	199,261.19	588,799.99	21,215,355.92	883,973.16	2,520,805.16	52,852,418.93	2,202,184.12

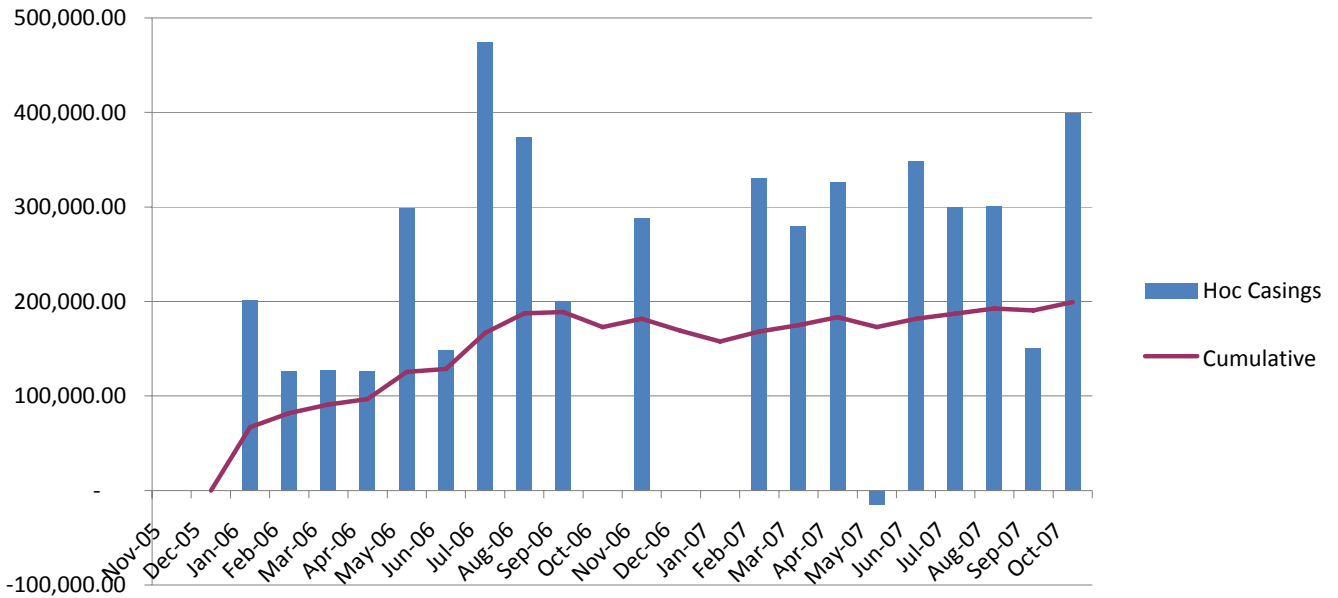
### Beef Imports



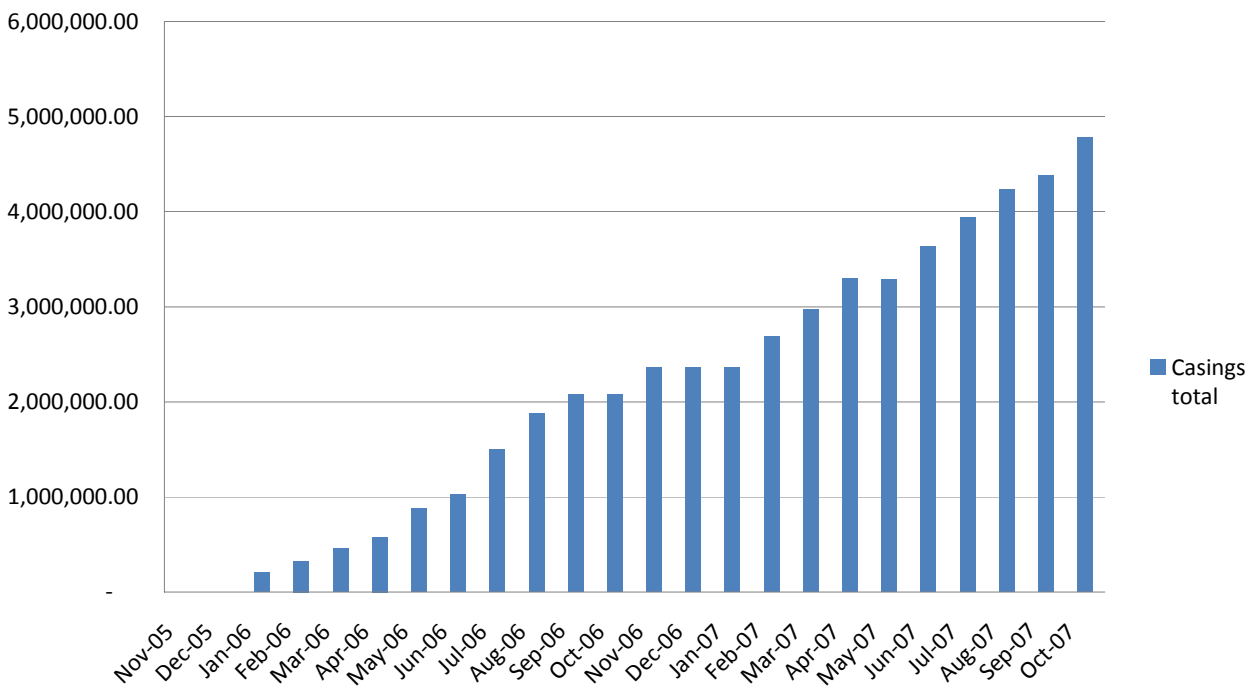
### Beef Imports Total



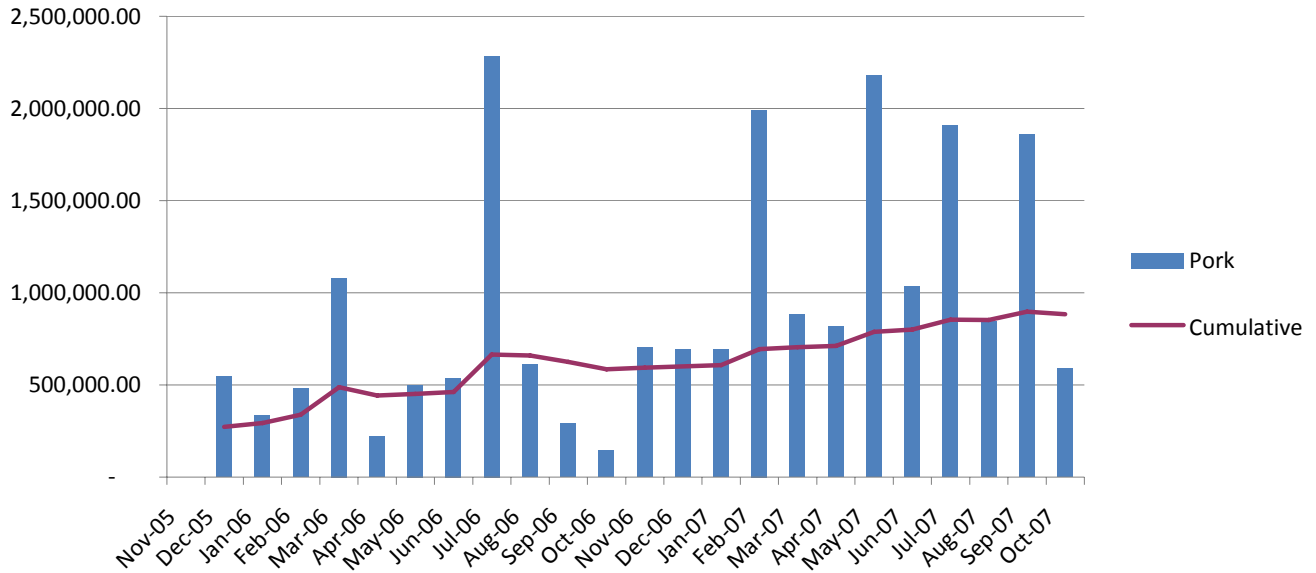
### Hog Casings Imports



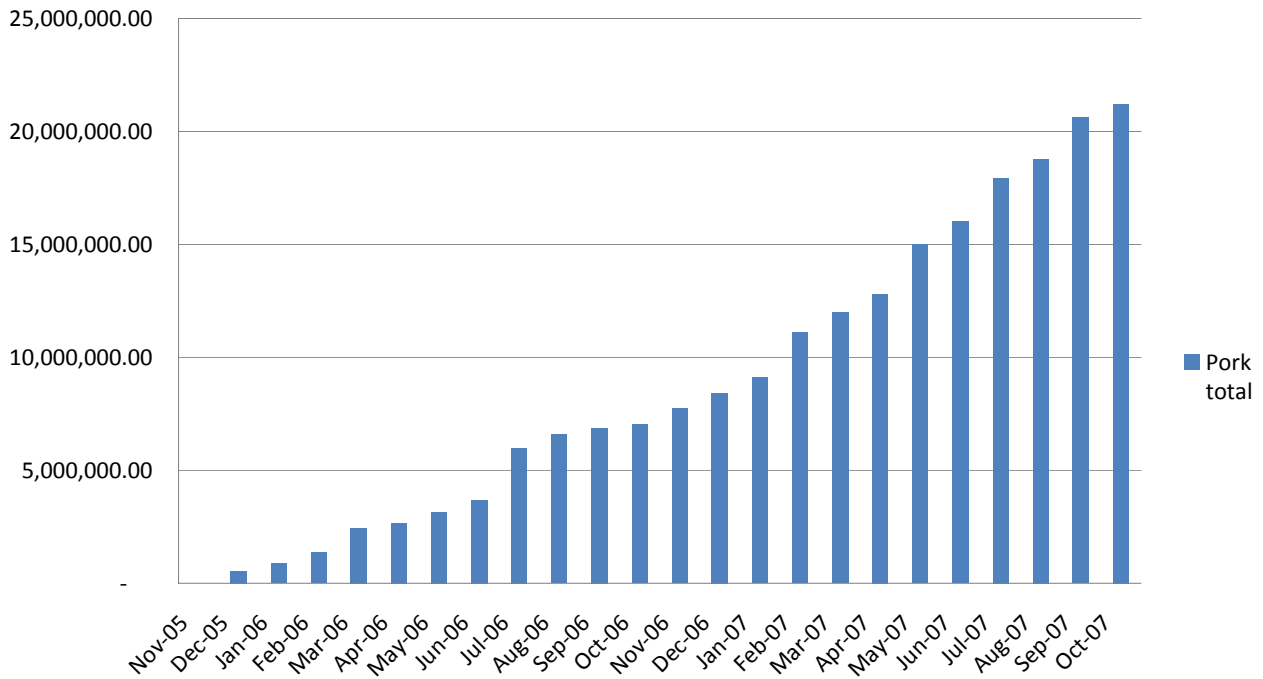
### Hog Imports Total



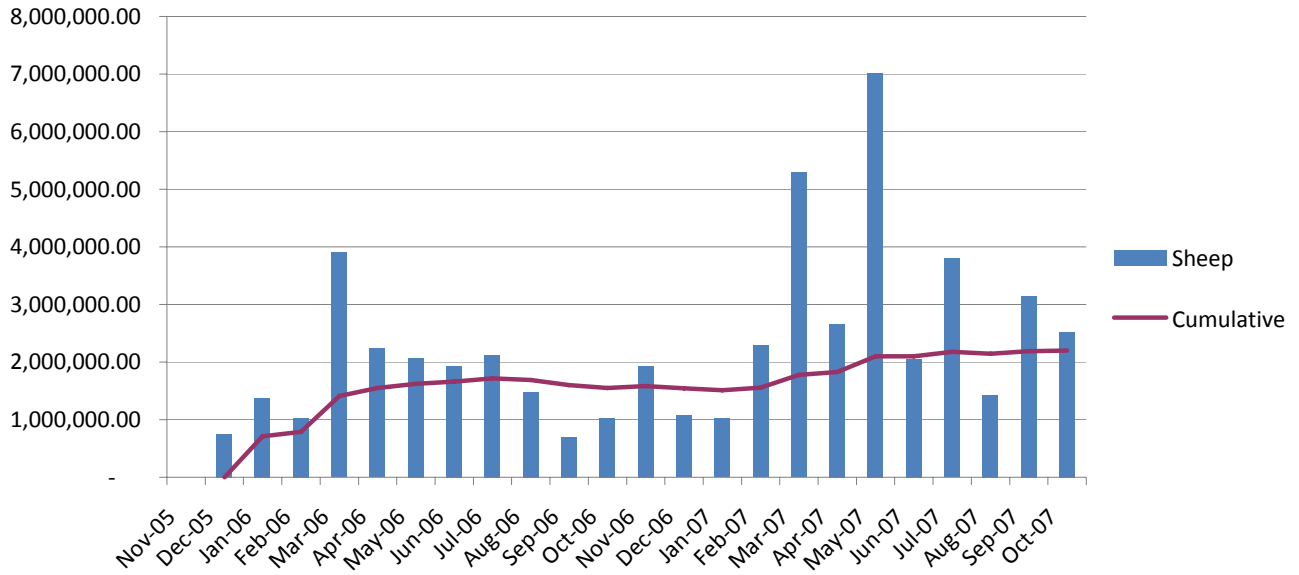
### Pork Imports



### Pork Imports Total



### Sheep Imports



### Sheep Imports Total

